

A 10x10 grid of letters L and S. The letters are arranged in a pattern that resembles a random walk or a sequence of steps. The letters are black on a white background.

This is a large, dense, black and white abstract graphic. It is composed of numerous small, overlapping, stylized letters and symbols, creating a complex, textured pattern. The elements are arranged in a way that suggests a sense of depth and movement, with some characters appearing more prominent than others. The overall effect is a high-contrast, monochromatic composition that resembles a digital or typographic collage.

SuperLattice is a theoretical exhibition and creative framework.

SuperLattices are structures built from data, each layer contains a grid of information stored in a similar manner to a two dimensional array — a computational structure used to store data.

In a SuperLattice these layers of information can be combined and recombined in different orders, and layers can be removed or added, making it easy to transform the constituent parts of information into something new.

SuperLattices allow new ways of relating to seemingly overwhelming quantities of information, and the ability of exploring new possibilities that emerge from interactions between the layers of information.

This publication acts as a guide to navigating the physical and ephemeral investigations I have undertaken.

```
int num[3][4] = {  
    {1, 2, 3, 4},  
    {5, 6, 7, 8},  
    {9, 10, 11, 12}  
};
```

		col →			
		0	1	2	3
row ↓	0	1	2	3	4
	1	5	6	7	8
	2	9	10	11	12

Illustration of a two dimensional array

The SuperLattice exhibition is itself built from a number of layers, placed inside a cabinet. The exhibition acts as a form of SuperLattice combining multiple layers of information in the form of:

Projections. Digital and analogue projections of films, animations, still images, light and shadows.

Ephemeral Objects. Transparent and refractive devices that manipulate light. These take the form of crystals and transparencies.

Mechanical Devices. Sensors and machines that gather information from their surroundings and respond through sonic or kinetic action.

Miscellaneous. Objects that do not fit into the above categories. These consist of found objects such as historical slides and 3d models generated from data derived from SuperLattice processes. These objects manipulate light and information in their creation but are now static forms.

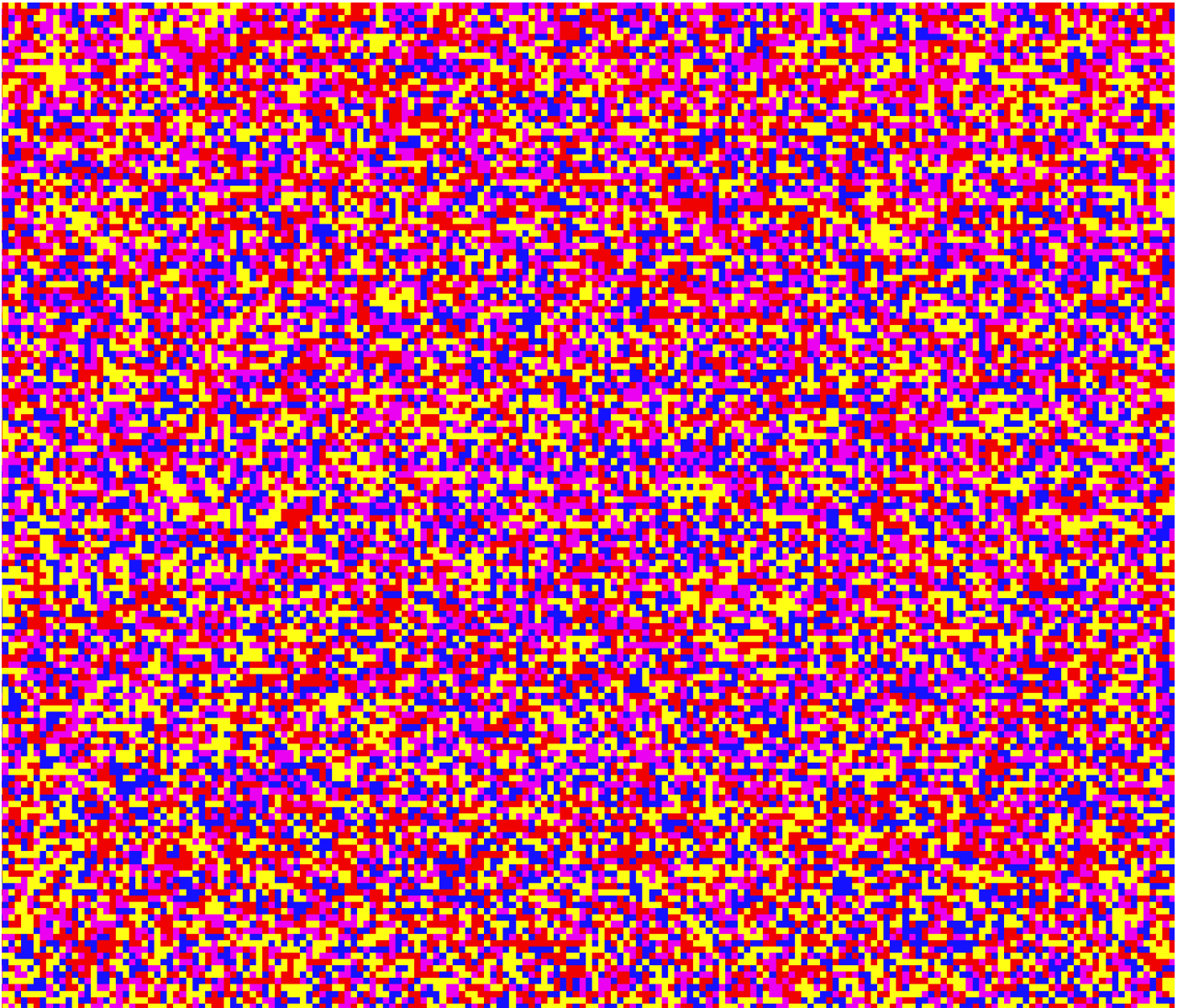
SuperLattices act as a form of sensory Wunderkammer where viewers become part of the SuperLattice, processing sensory and textual information to create a layered, morphing understanding of what they are experiencing.



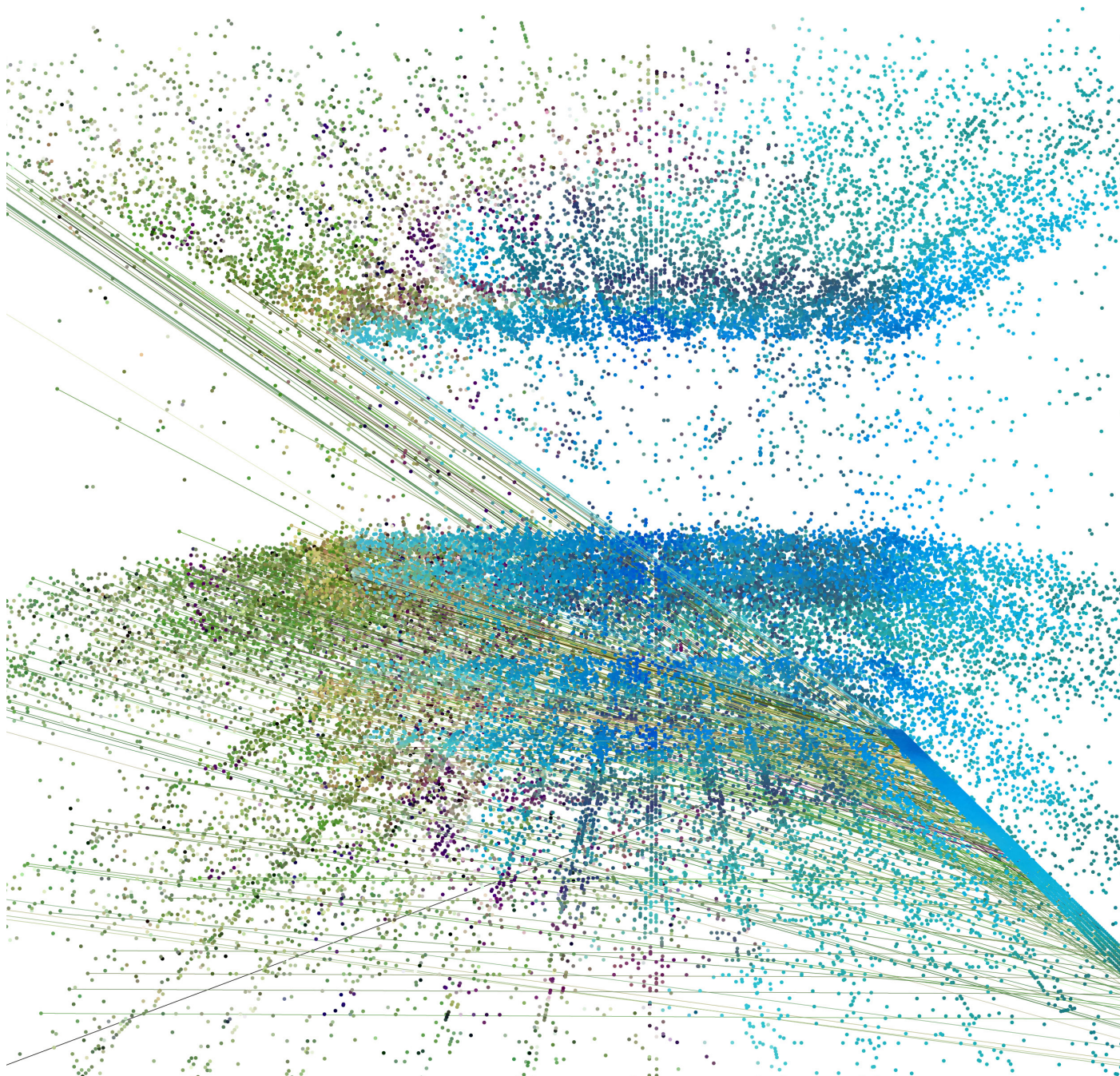
An illustration of the Wunderkammer of Ole Worm whose collection was said to include ancient sculptures, clockwork automata and the remnants of strange, mythological beasts.

Many Wunderkammers such as Moles mixed fact and fiction allowing naturally occurring items such as a Narwhal tusk to be interpreted as otherworldly and mystical.

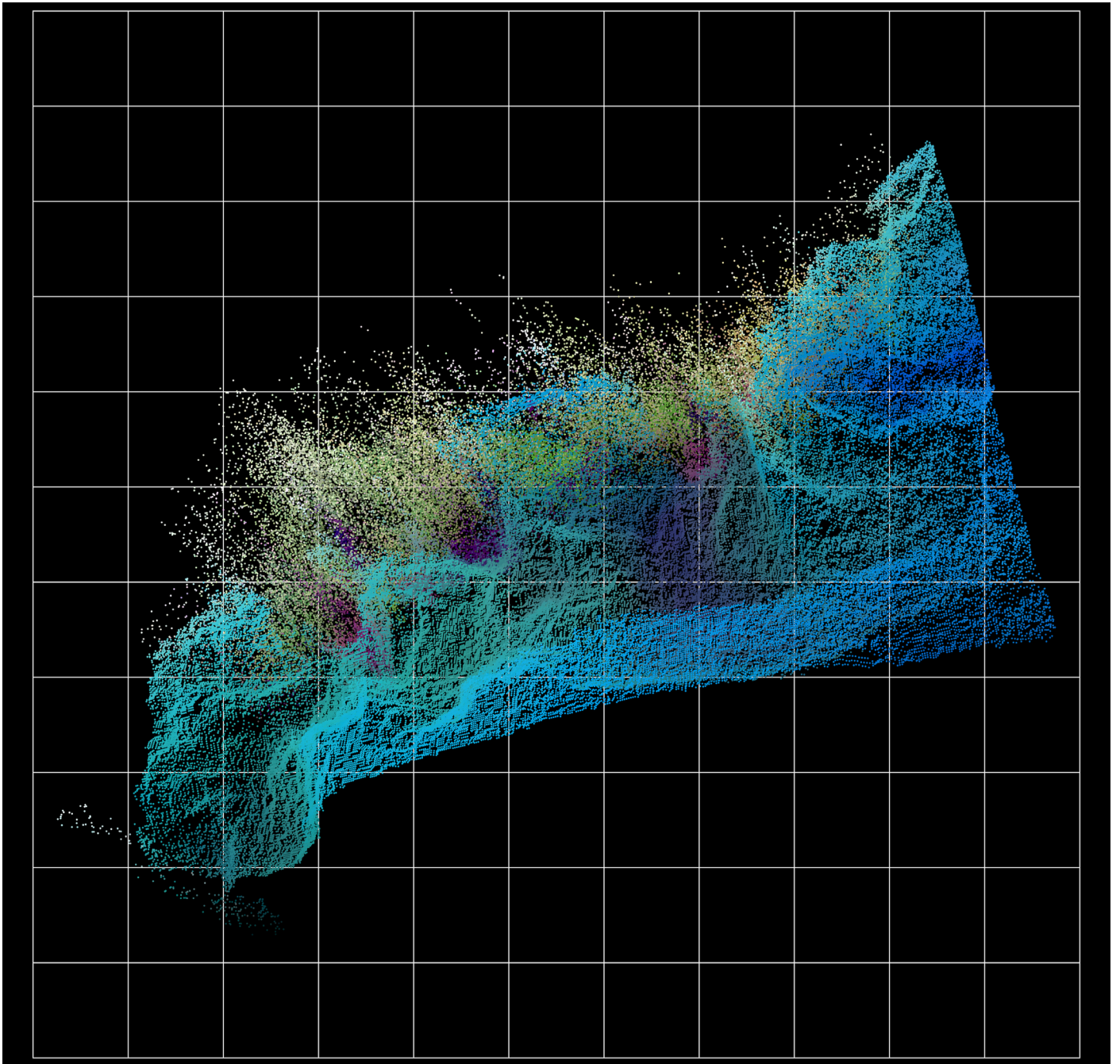
Projections - layers of information form the foundational layers of SuperLattice. These images/animations will be projection mapped as well as projected directly at the central cabinet in the SuperLattice exhibition.



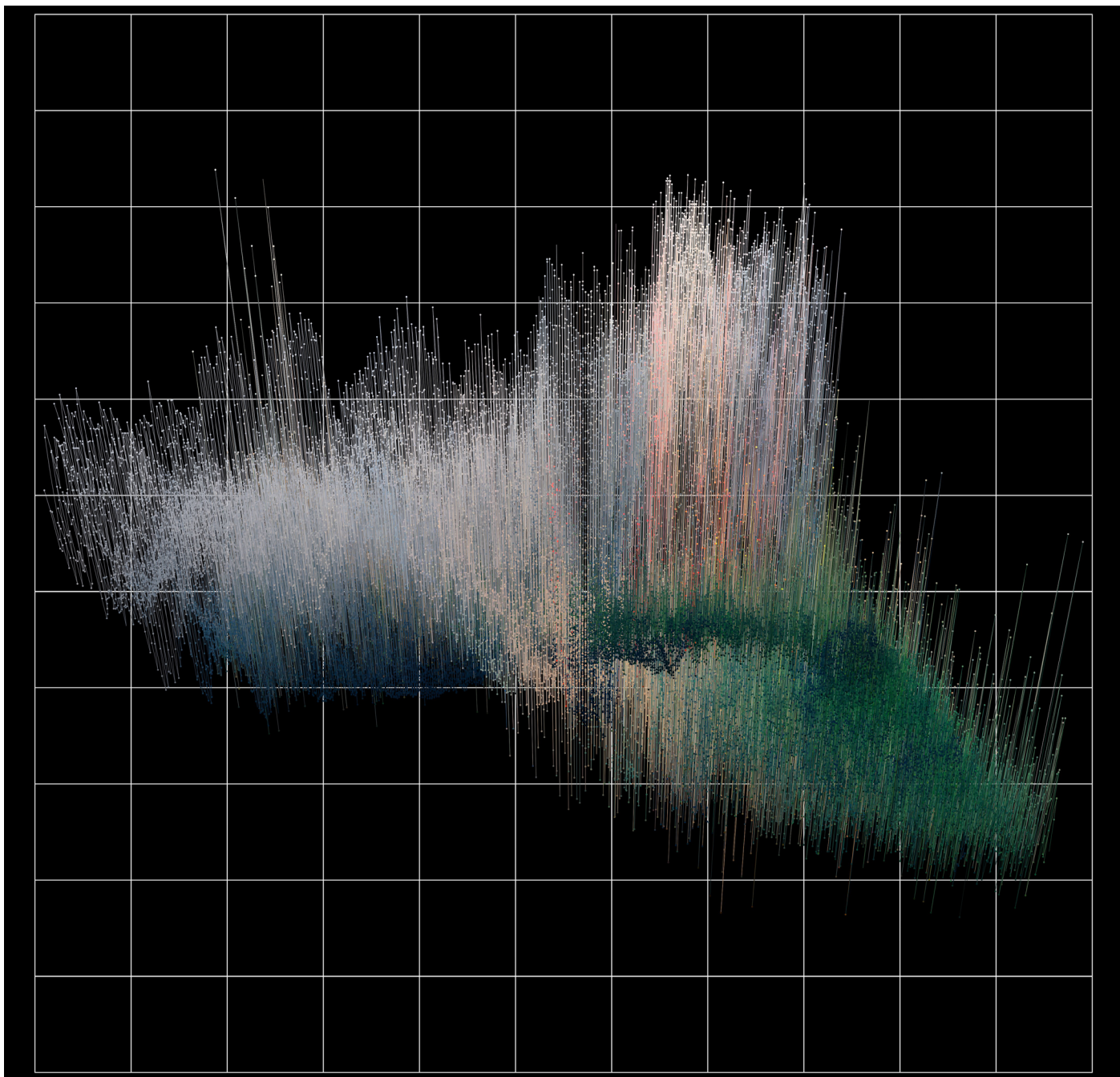
Visualisation of Adenovirus, nucleotides represented as colours



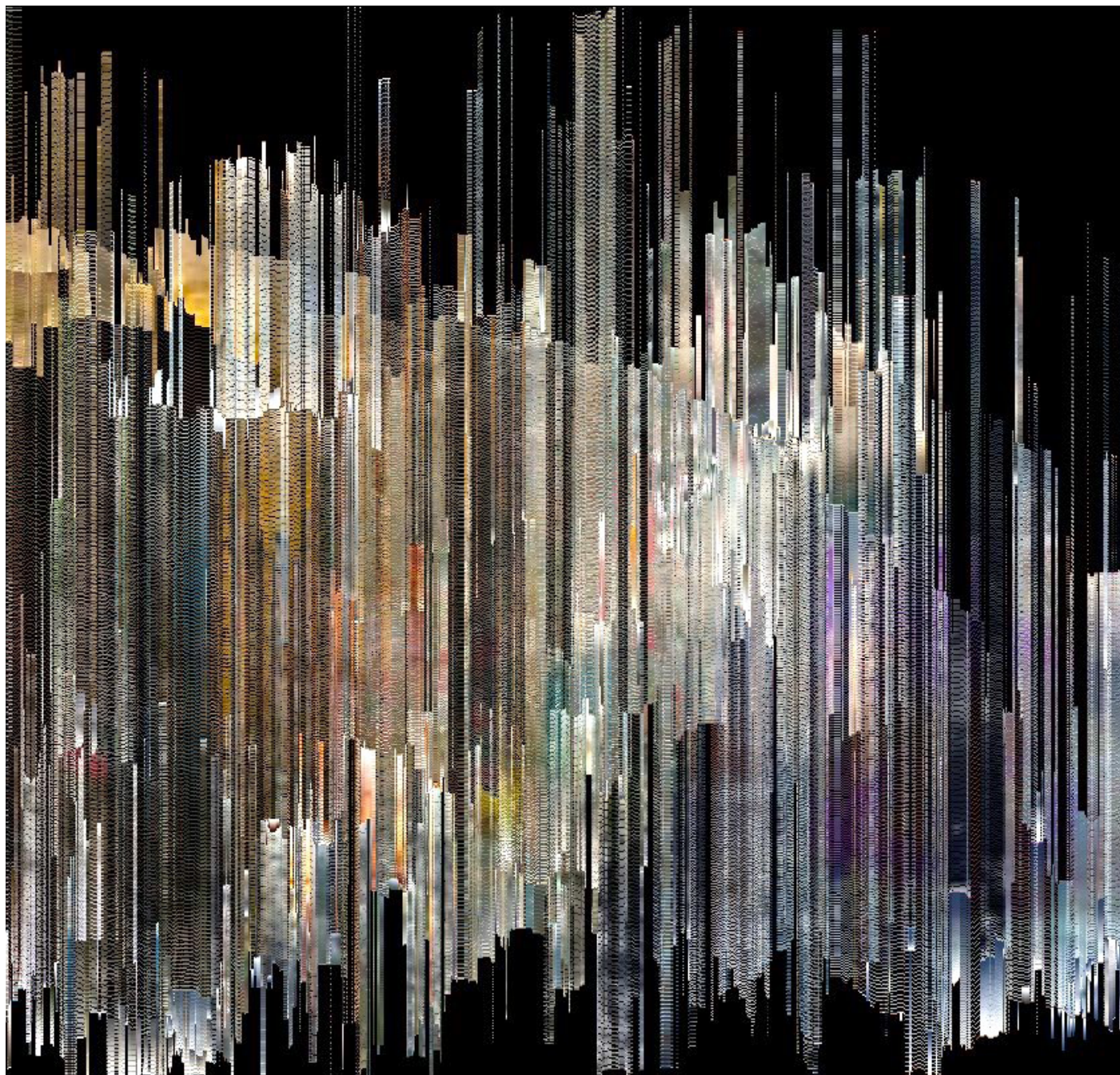
Satellite imagery infected by Adenovirus



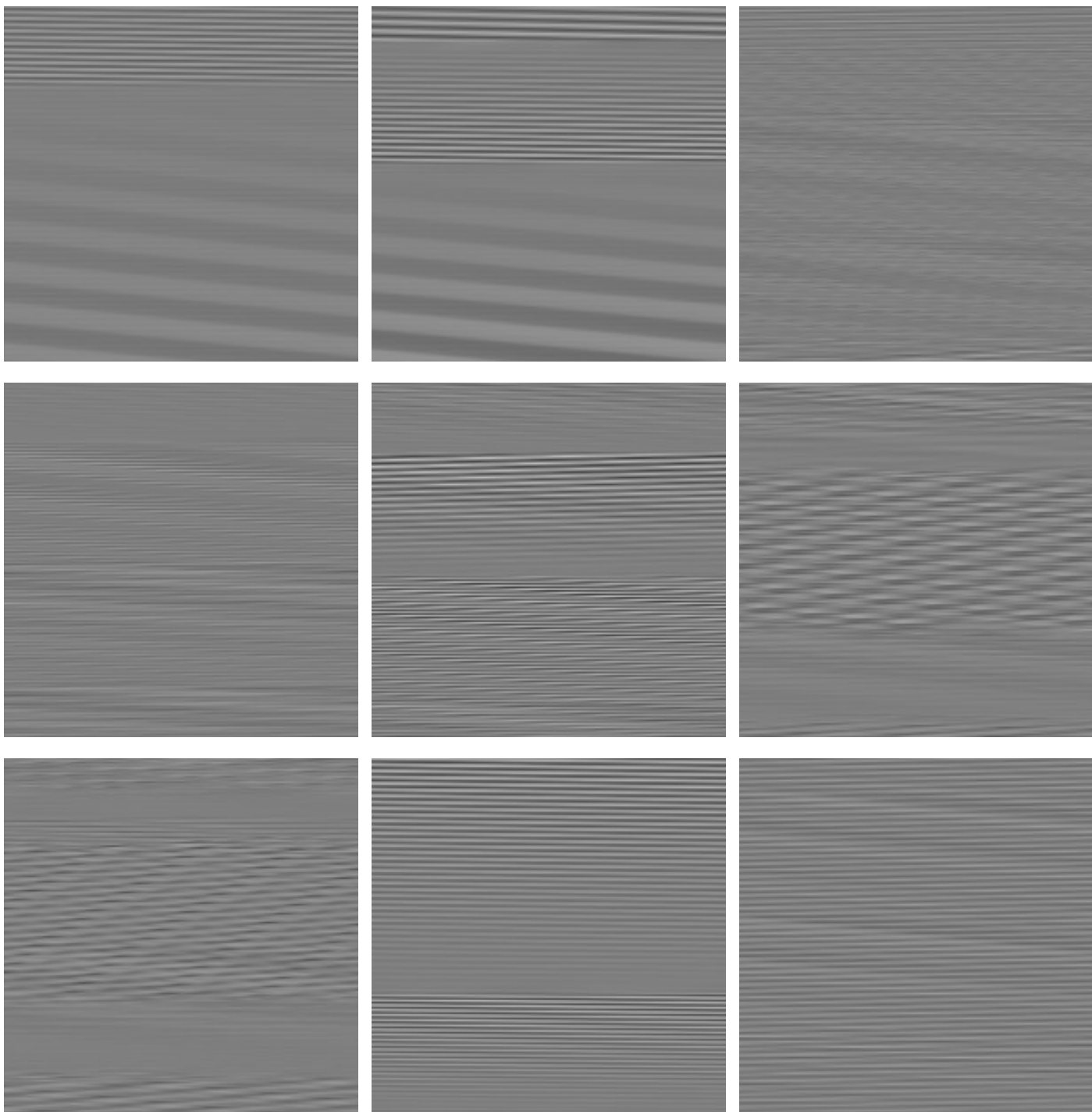
Satellite imagery infected by data from polluted rivers depositing sediment and pollutants off the North Carolina coast.



Satellite imagery infected by data from Californian wildfires in 2019



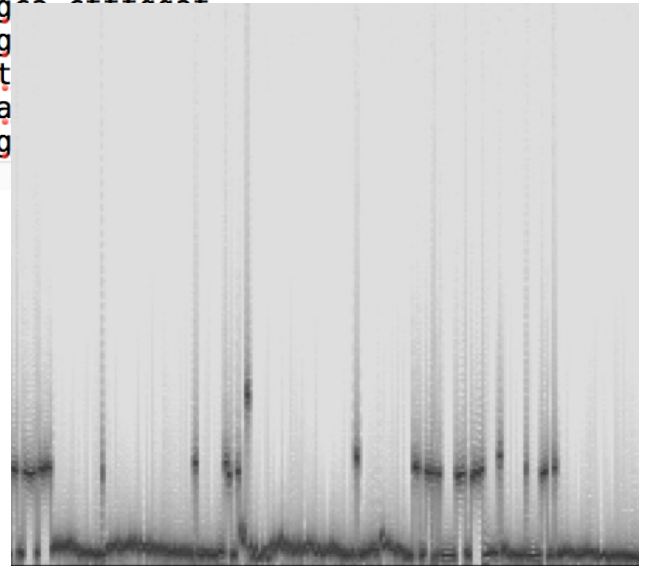
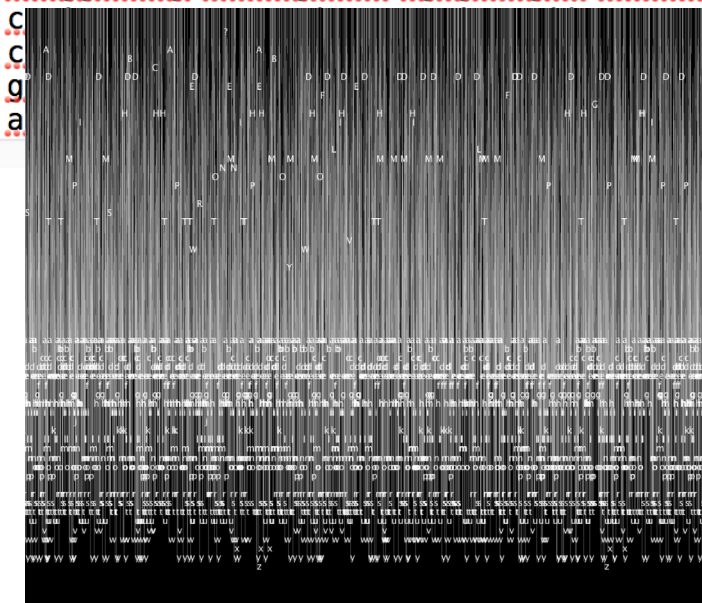
All news reports on Australian wildfires sorted by colour content



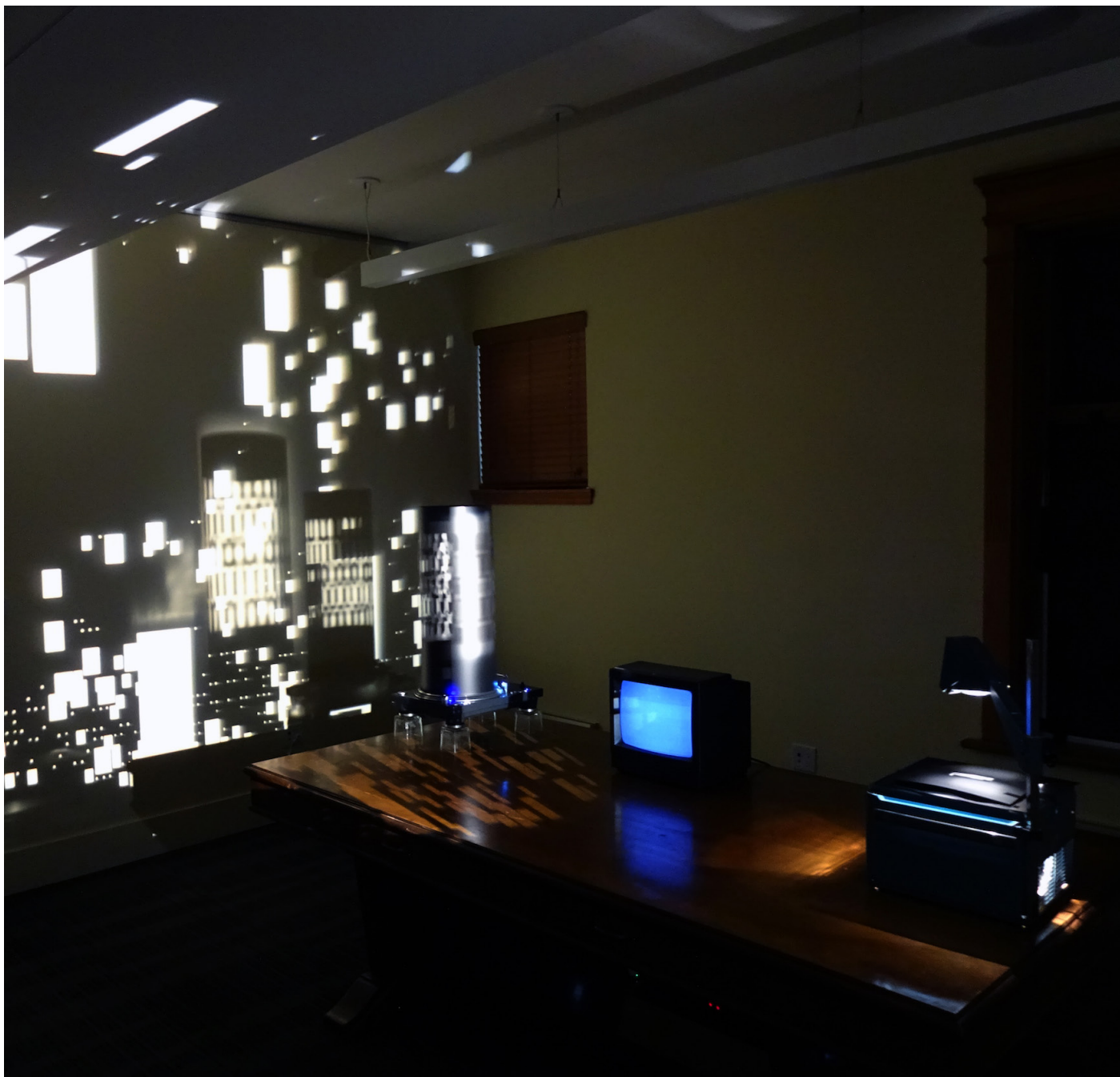
*Audio converted to image and altered through Machine Learning processes
Selection of images from Daisy Bell, Max Matthews, sound to image.*

adenovirusgenome

cctatctaataatataccttatactggactagtccaata ttaaaatg
tgtgtaatttgattgggtggagggtgtggctttggcgtgcttgtaagtt
gaagtggggcgcgcggtgggagccgggcgcgccggatgacggtttttg
cacggaaatgatgttttttgggcgttgtttgtgcaaat
tgaaatgcggaagtgaataatgatgacggcaattttat
agggcagagtgaactctgagcctctacgtgtgggtttc
tccacgttggcgctcaaaggcgcgtttattgttctgt
atgccgccgtgttcgtcaaggagccactctgagtgcc
agctcattttcacggcgccattatgagaactgaaatga
ggaagctgacgacatattggagcatttgggtggacaact
tgatgatctttatgttccgctcttttacgaactgtatc
tgaagataataatgaacaggcggatgaatgagtttttc
cagtgaggggttgttttttacgggagcctcctgtacttt
gggcgaatgatgccacaac tgcacctgaagatatgc
ctttccctgtagcgattcgaagacgagcagaacgaga
atccgcagctgctgctgccctgatagggaacgtgaggagtttcagtt
gttgcccgga cacaattgtagtcctgtgacaccacgaatagtac
cttaatgtgtctttttgtgctatctgcgagcctacaacatgttcattta
tatgggaggtgggaggtgat ttttttttcttaagcagtga aaaataat
ttaggtcctgtttccgataatgagcctgaacctaataagacgttttccat

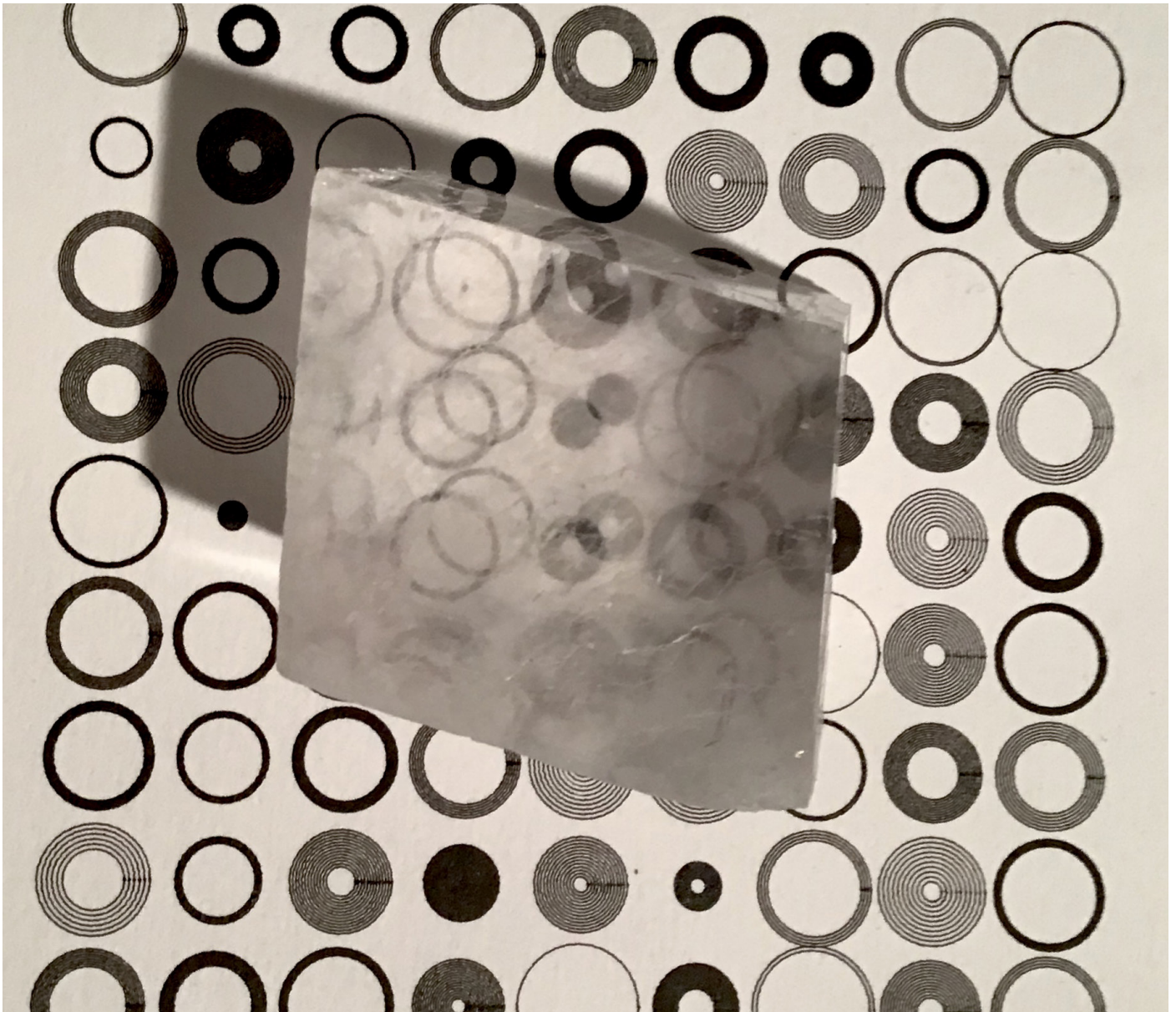


Raw data and text

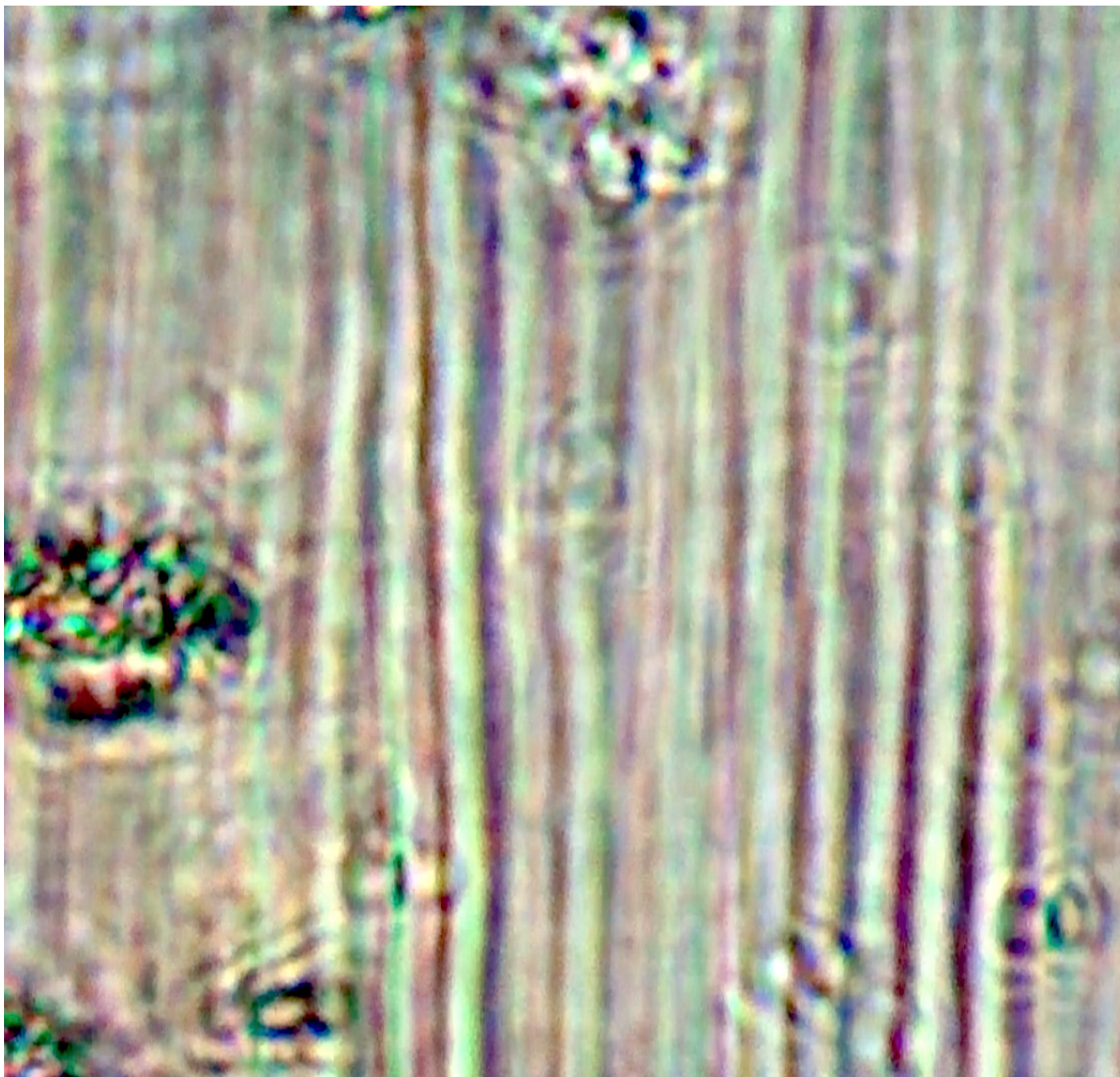


Supernova information distributed through projections and light

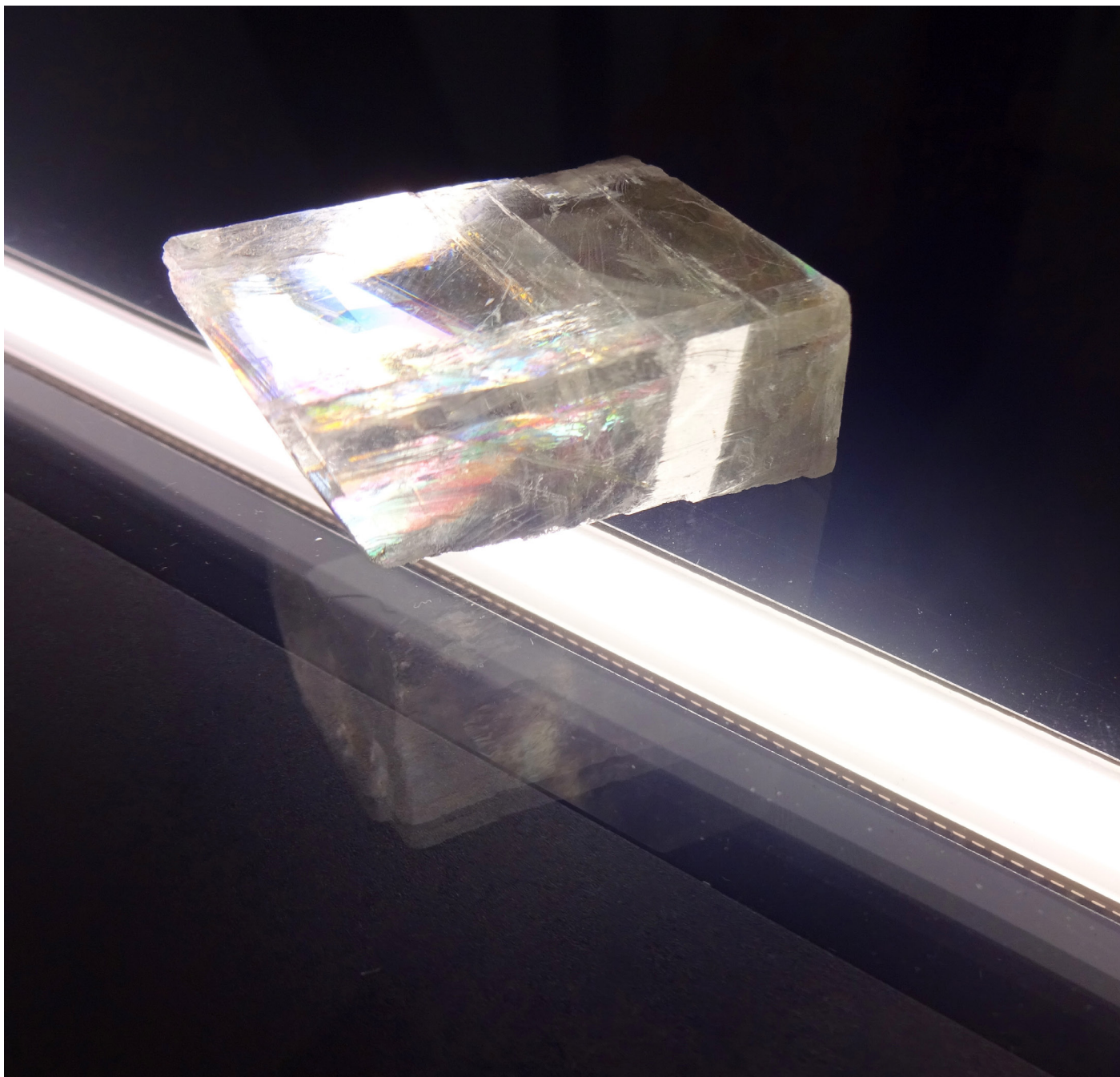
Ephemeral objects - Objects that reflect and transform light creating distorted and new forms. These objects are transparent and hard to observe but their effects on image and information is profound.



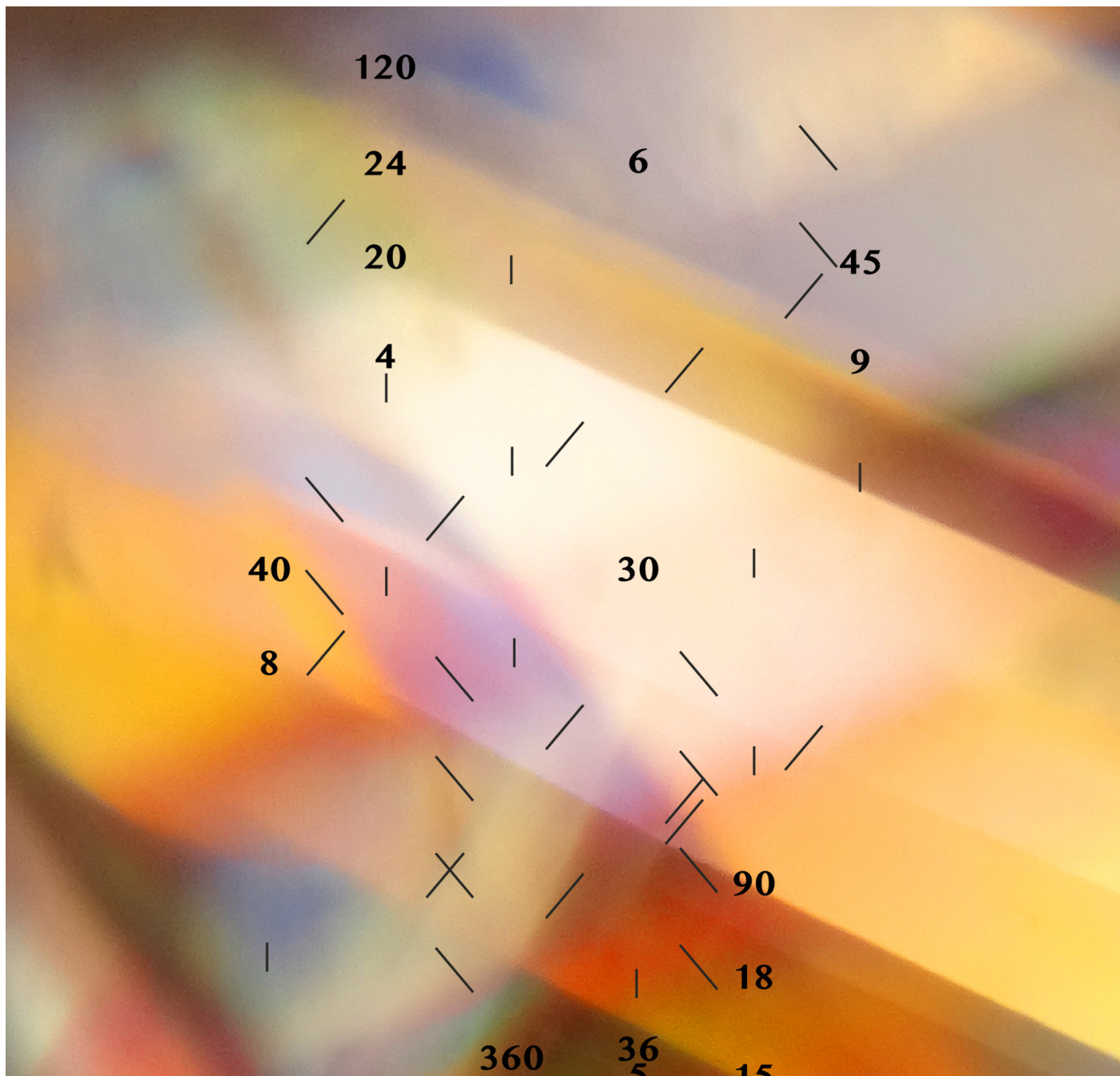
Calcite crystal distorts and splits light



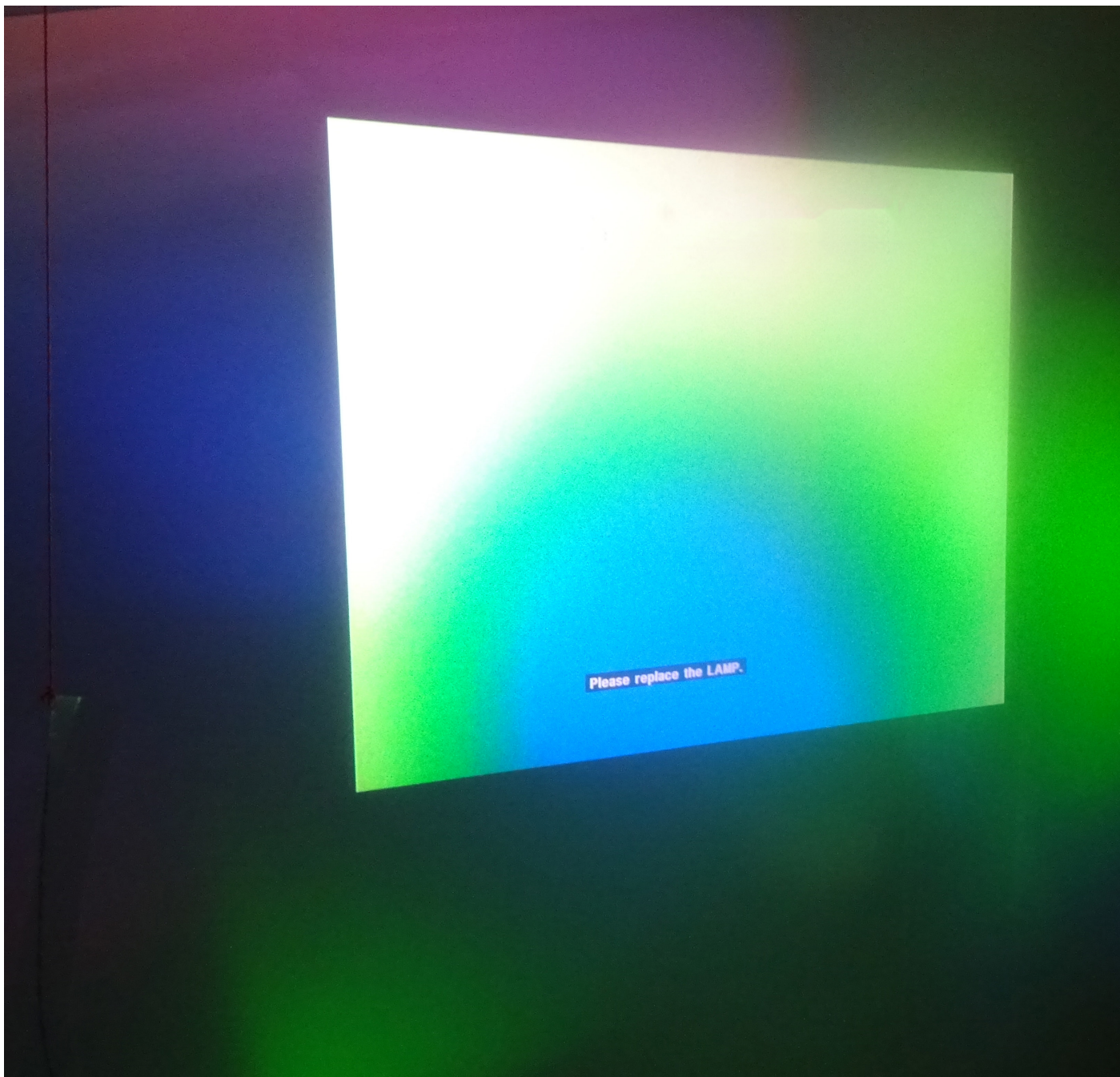
Calcite crystal causes moire pattern like effects under microscope



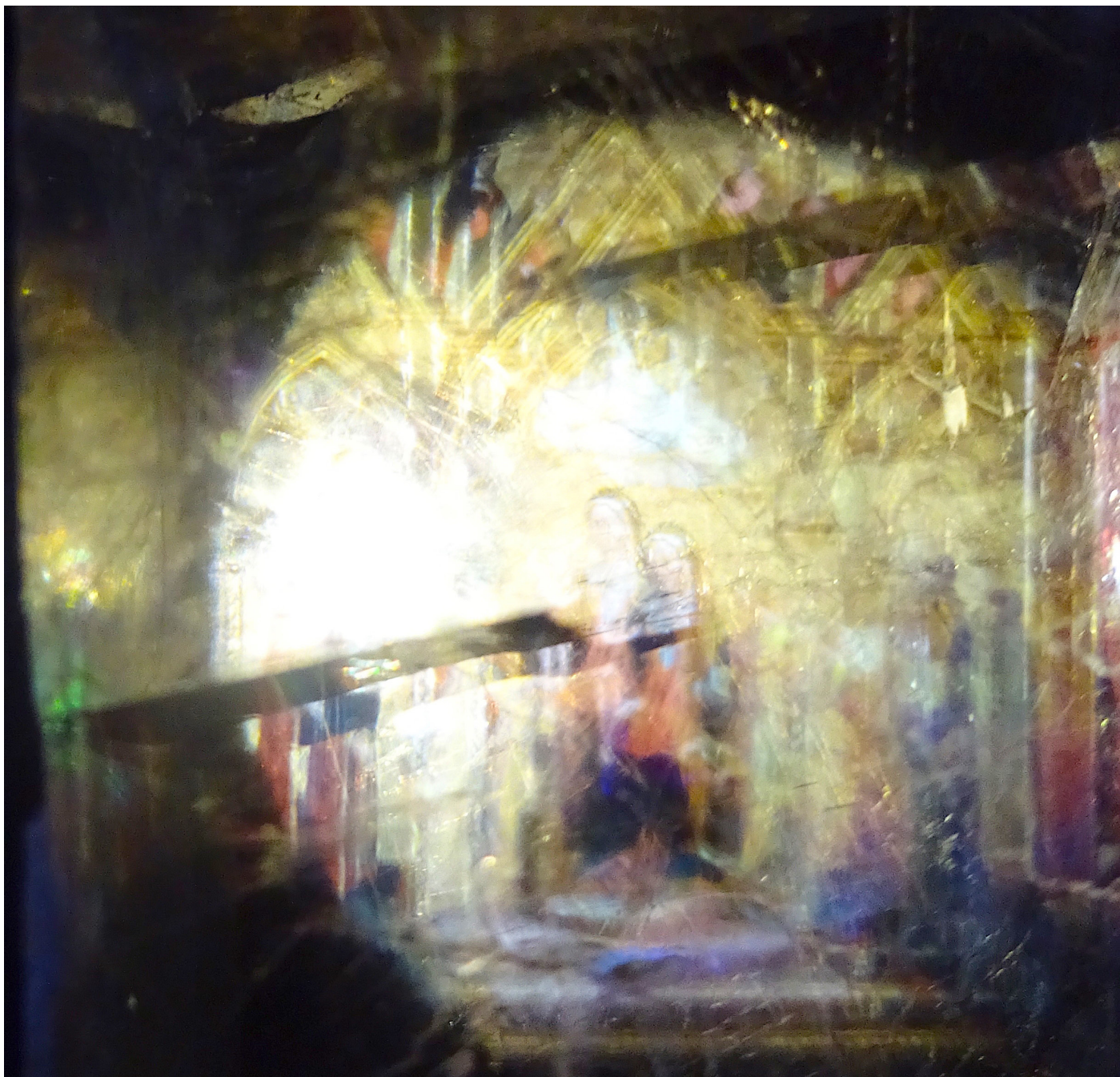
Calcite crystal moves light while scanned



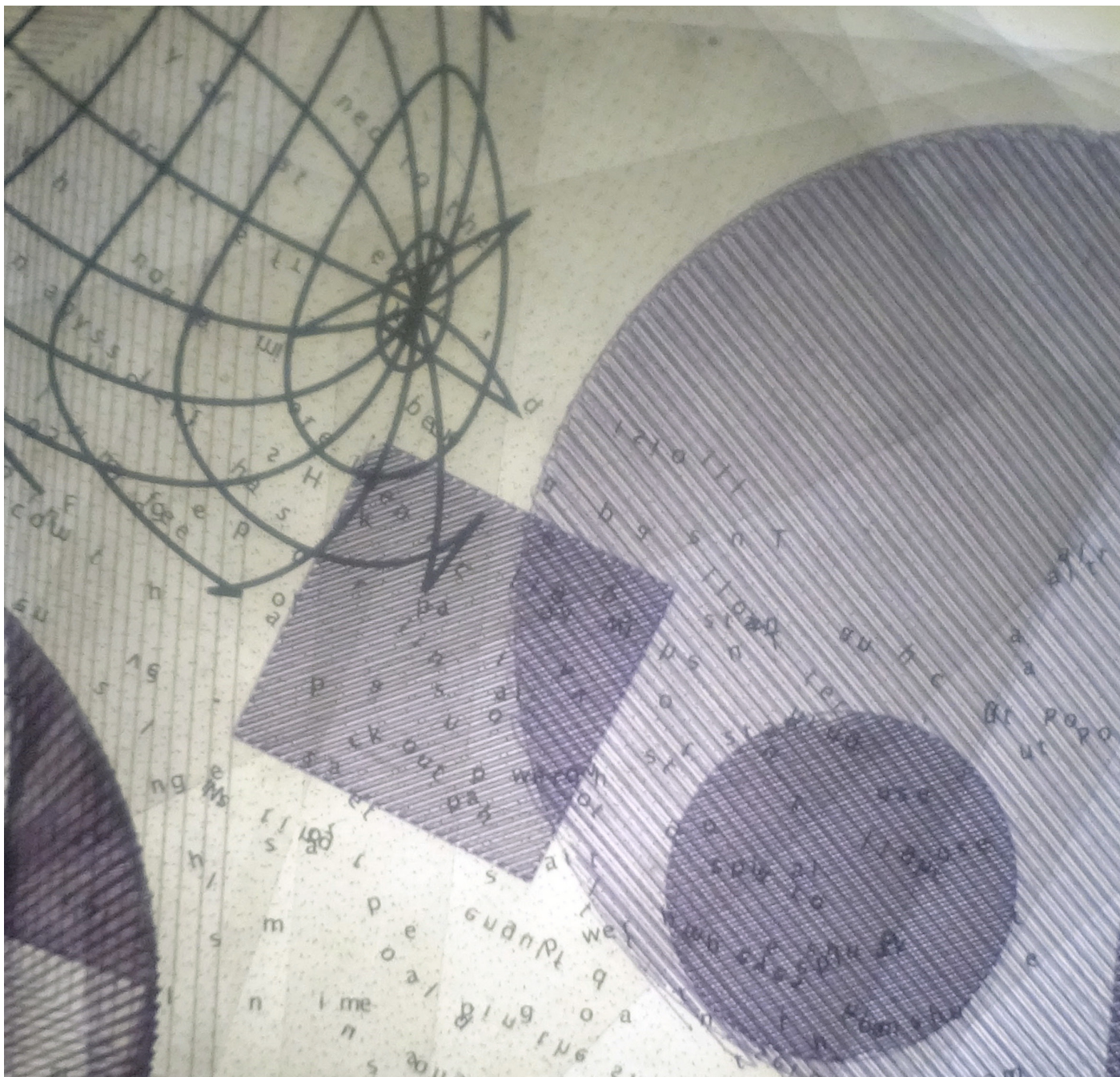
A Score for Navigating Crystals, Calcite crystal scan with manipulated mathematical representation of a crystal lattice superimposed.



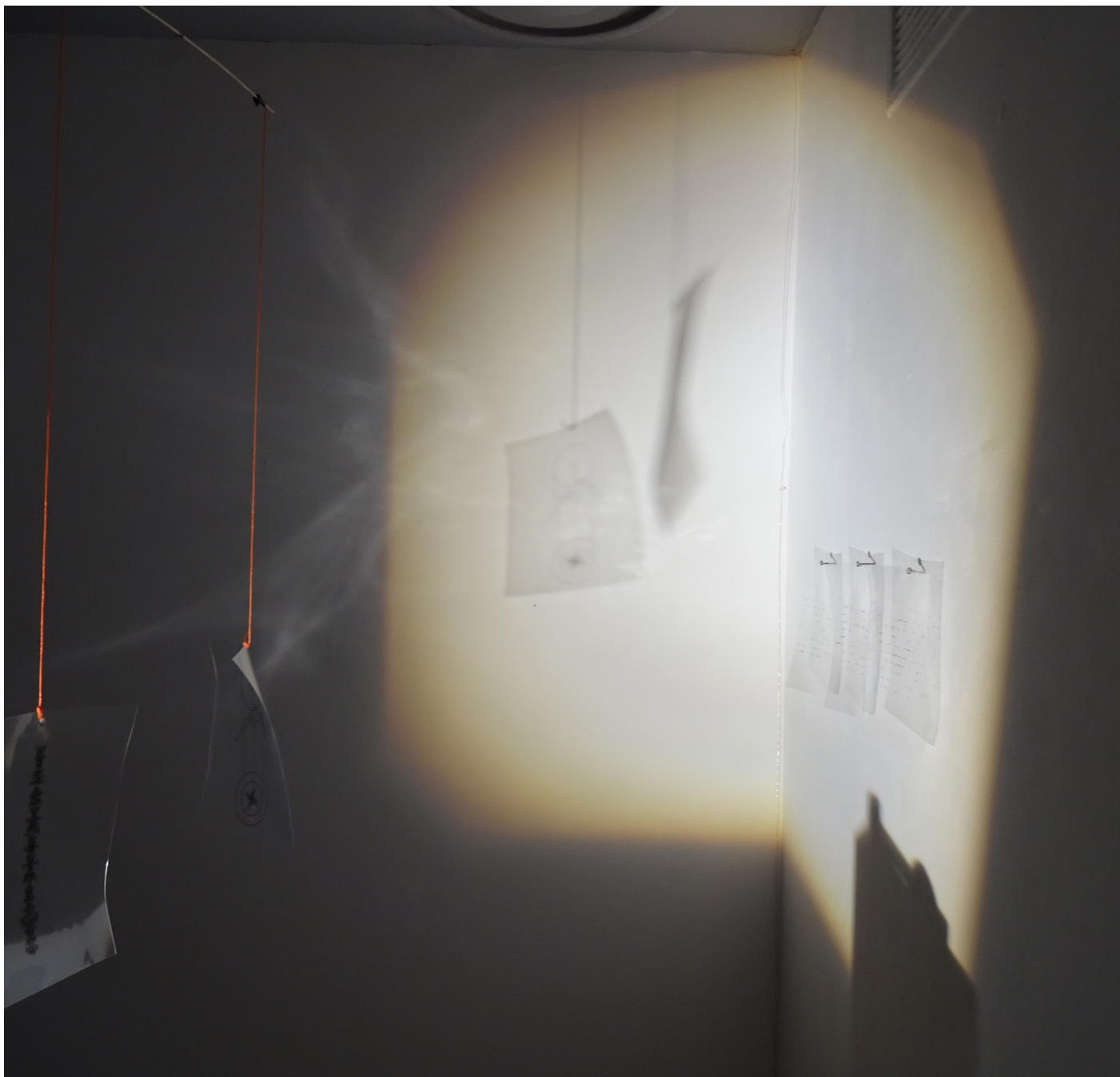
Calcite applied to projector, manipulating solid green light



Calcite placed over slide

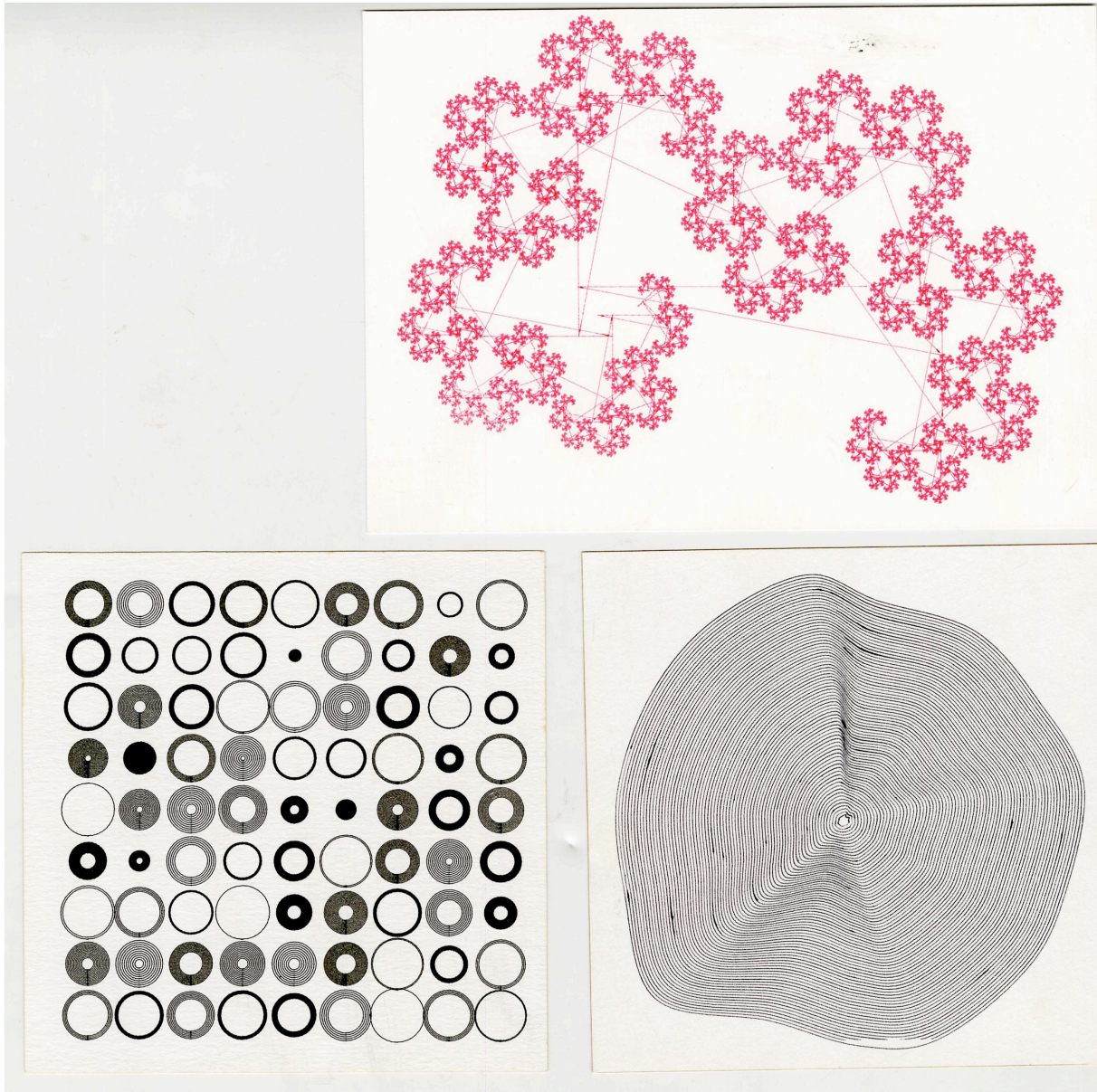


Accumulations of acetates on overhead projector

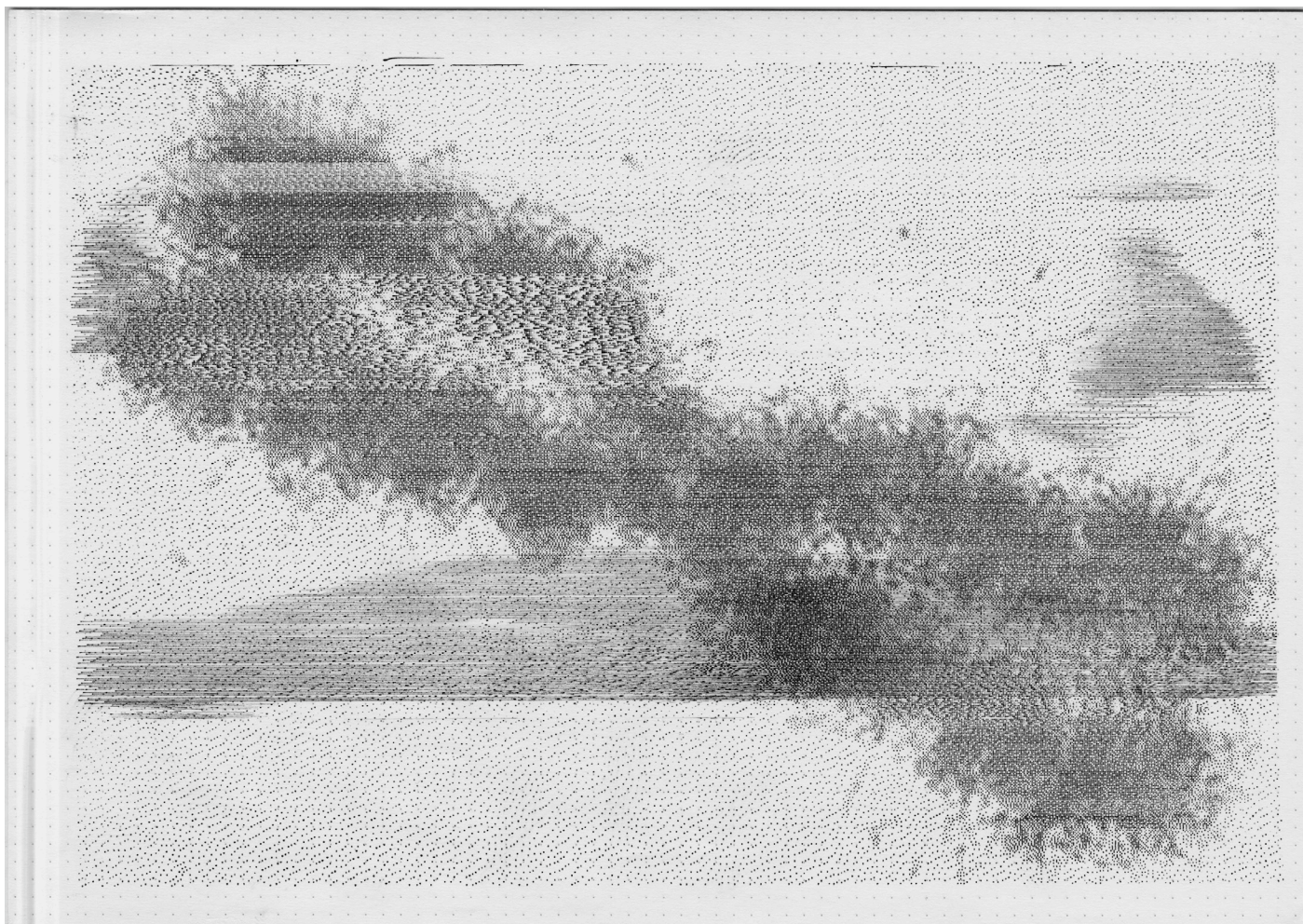


Astronomical information split between acetates and recombined through light

Mechanical Devices - Machines that transform information into kinetic actions. The information transformed comes from other layers of the SuperLattice alongside real time information gathered by sensors placed in the exhibition



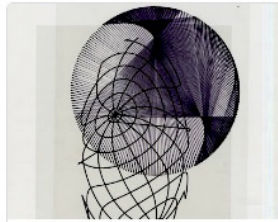
Data drawings translated by pen plotter machine



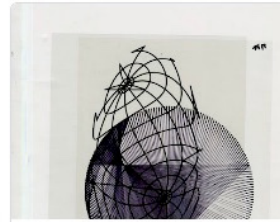
Dithered chromosome, drawn by pen plotter machine



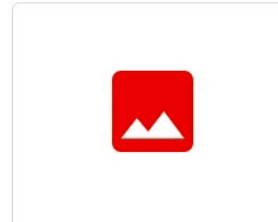
📷 Scan 3.jpeg



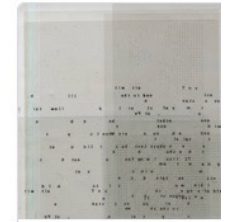
📷 Scan 4.jpeg



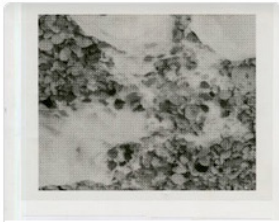
📷 Scan 5.jpeg



📷 Scan 6.jpeg



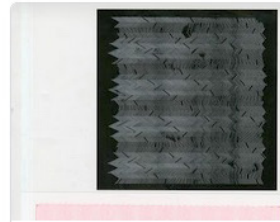
📷 Scan 7.jpeg



📷 Scan 10.jpeg



📷 Scan 11.jpeg



📷 Scan 12.jpeg



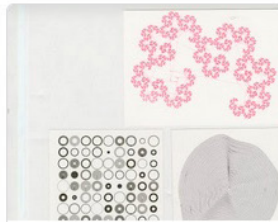
📷 Scan 13.jpeg



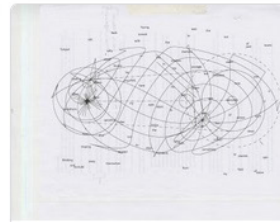
📷 Scan 14.jpeg



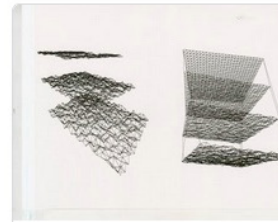
📷 Scan 17.jpeg



📷 Scan 18.jpeg



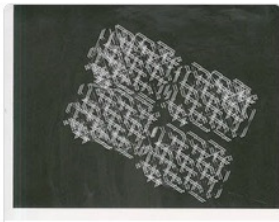
📷 Scan 19.jpeg



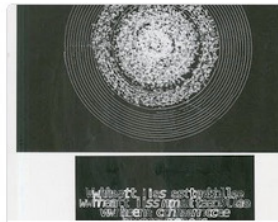
📷 Scan 20.jpeg



📷 Scan 21.jpeg



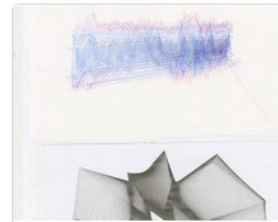
📷 Scan 24.jpeg



📷 Scan 25.jpeg



📷 Scan 26.jpeg

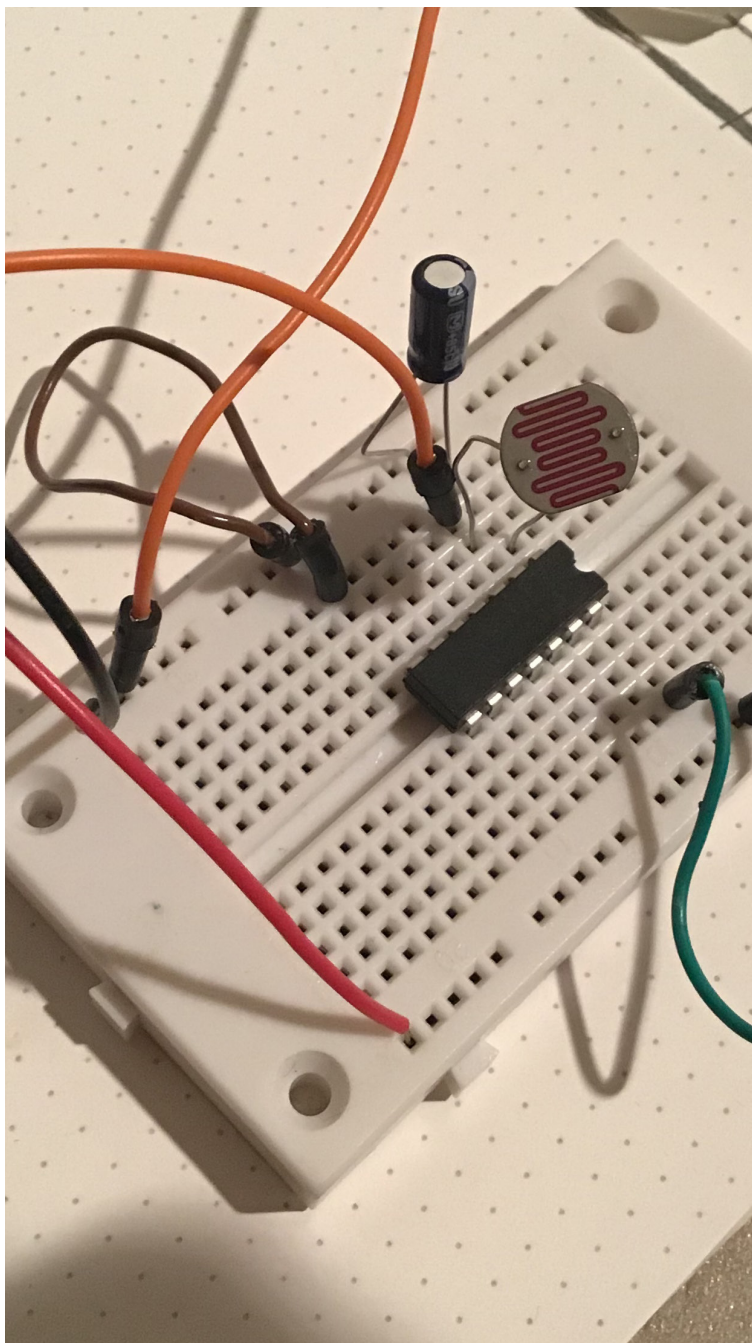


📷 Scan 27.jpeg

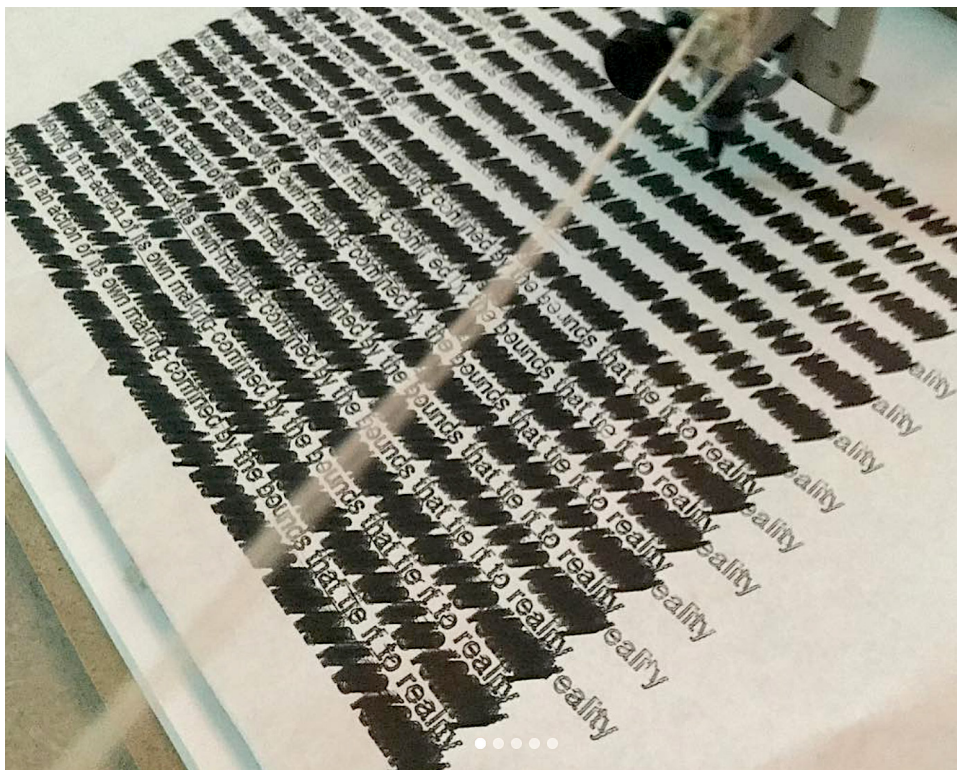


📷 Scan 28.jpeg

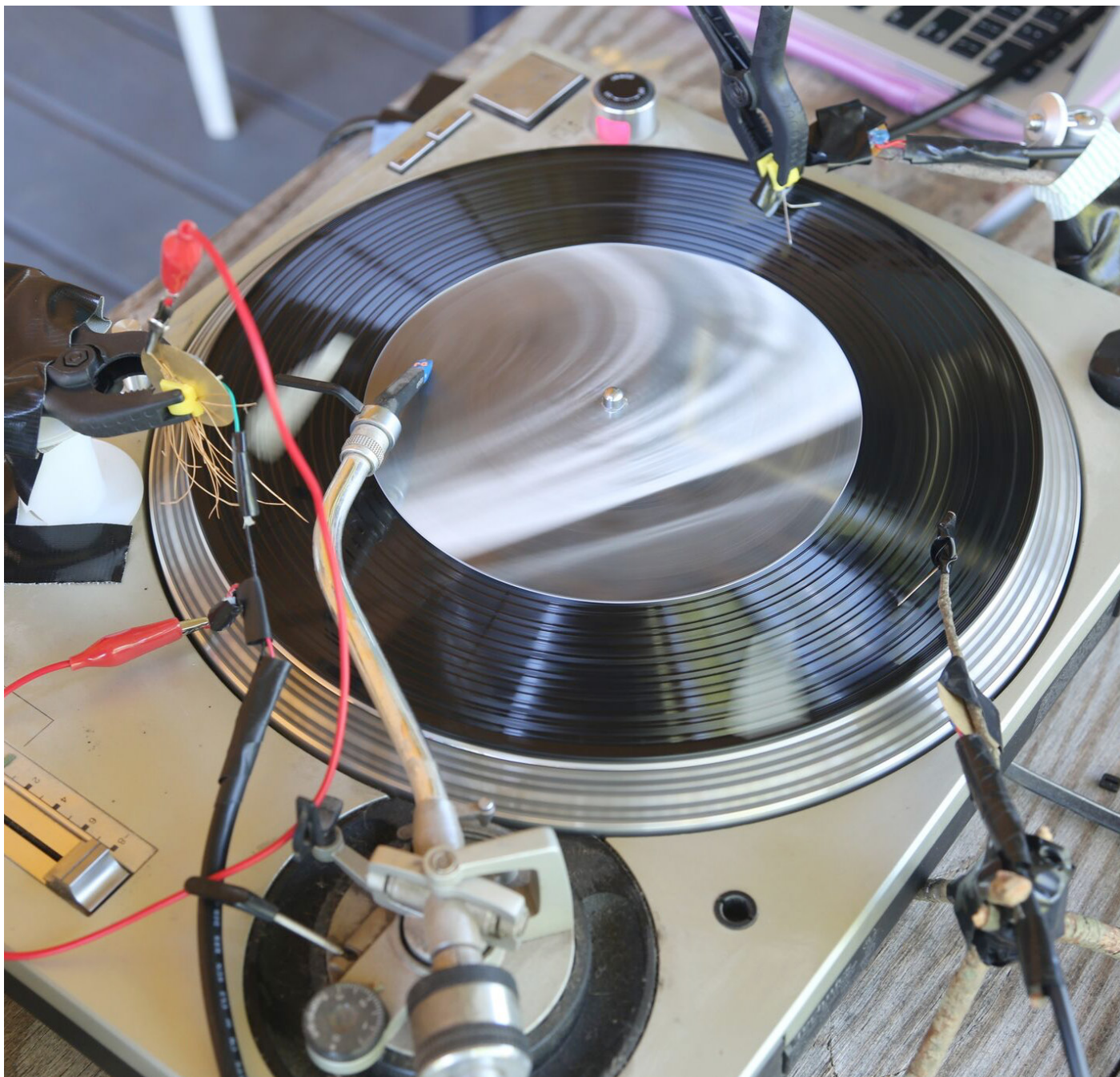
Multiple pen plots



Photoresistors and other optical sensors convert light into sound and transmit this information to be converted into mechanical drawings

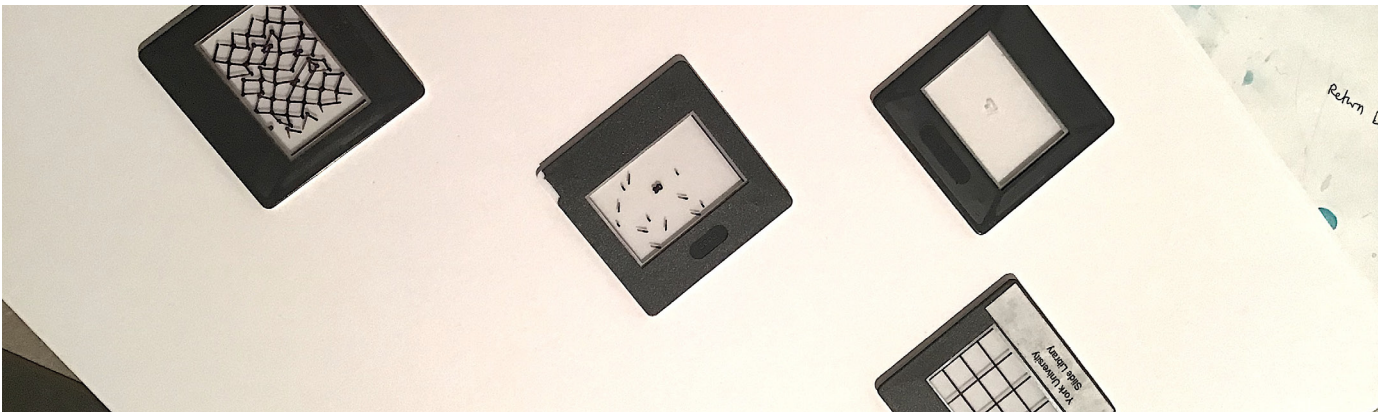
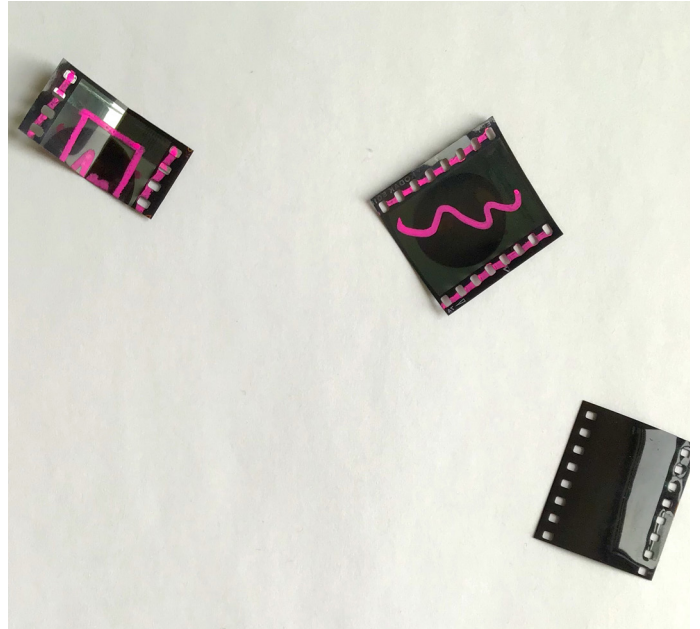


Machines feed back on themselves - processing output as input



Information lasercut and lathecut into playable records.

Miscellaneous - Objects that do not directly fit into the above categories. These play with the mythology aspect of the Wunderkammer and consist of found objects such as historical slides and 3d models generated from data derived from SuperLattices.



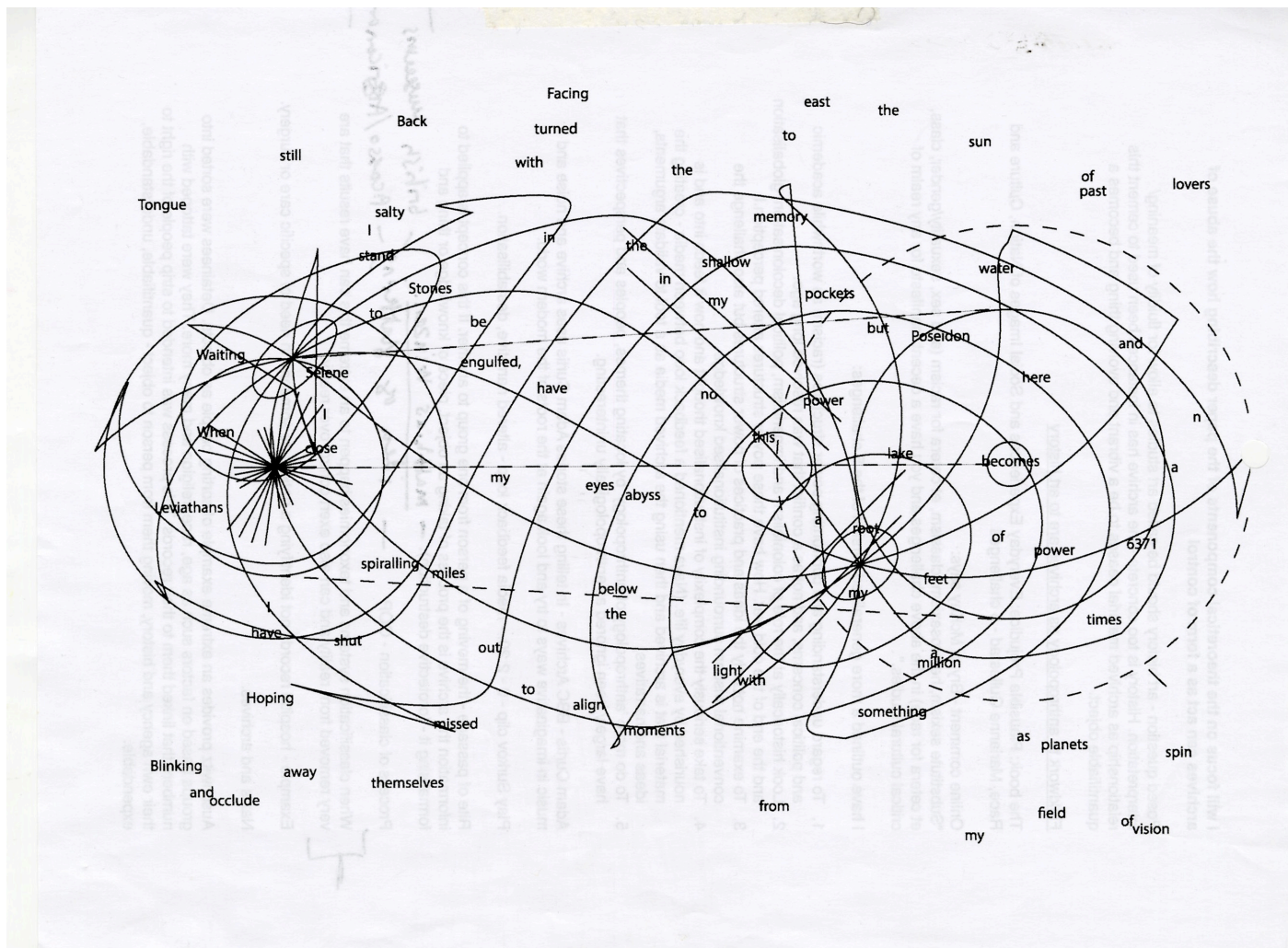
Modified slides



Transfers and contact prints



3d printed models - recent quarantine experiment testing how data can effect 3d models when applied.



Repurposed scientific diagrams from textbooks. Modified constellation map and diagram of syzygy pictured.

Exhibition sketches the previous chapters highlight the content and visual aesthetic that will make up the components of the cabinet in the SuperLattice exhibition. The following sketches intend to provide some idea of how these items will come together in the exhibition layout.

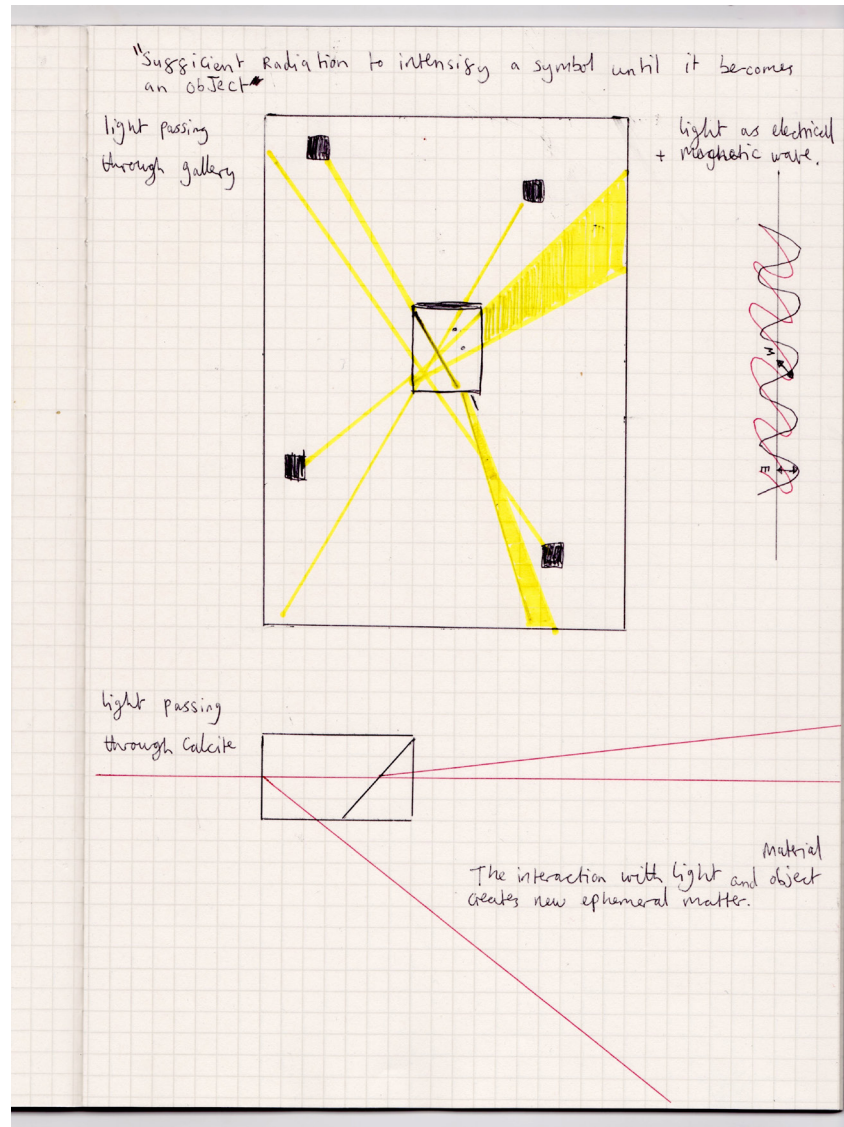


Illustration of projectors in relation to the central cabinet

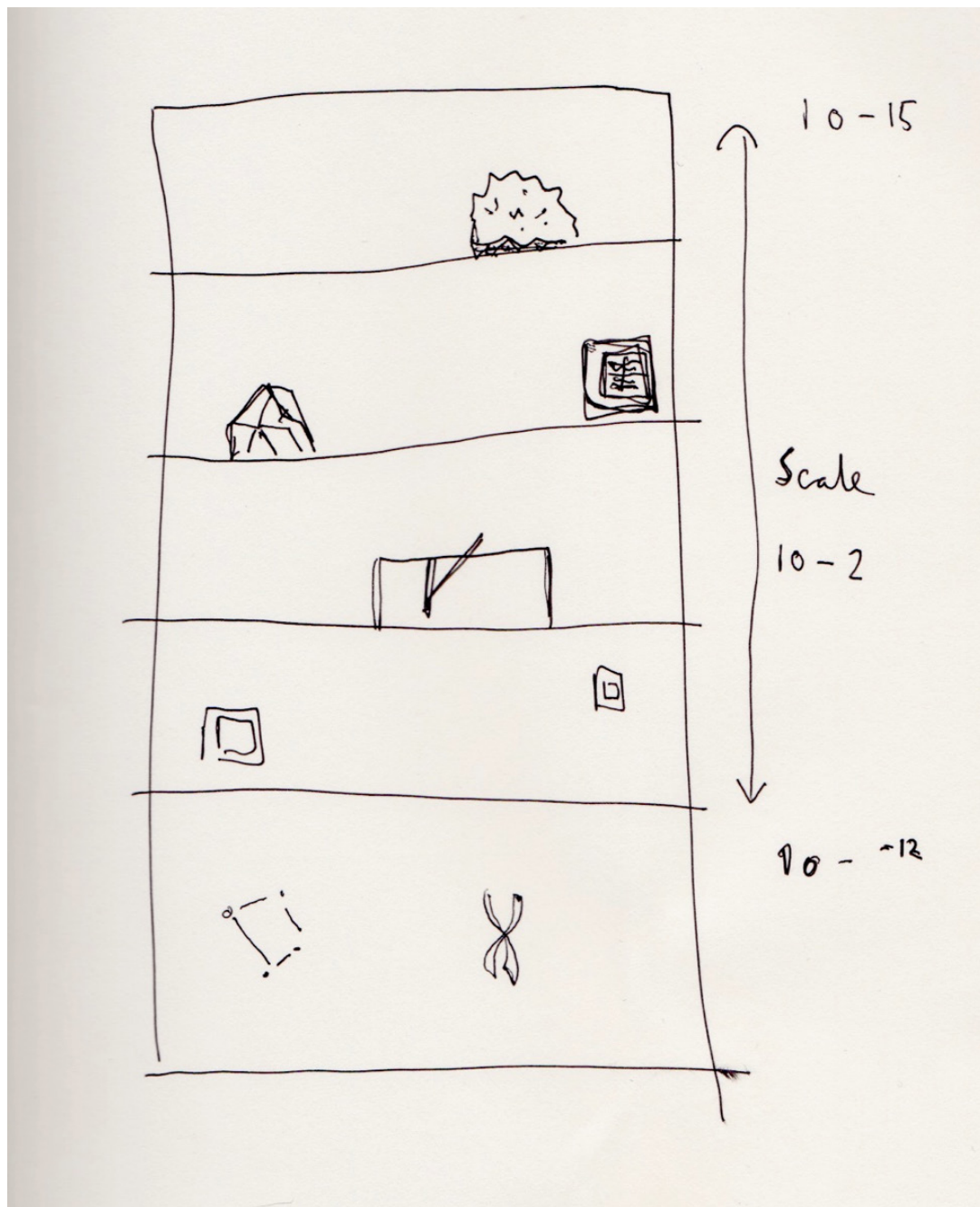
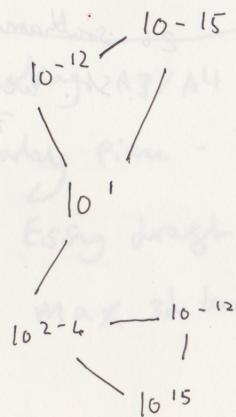
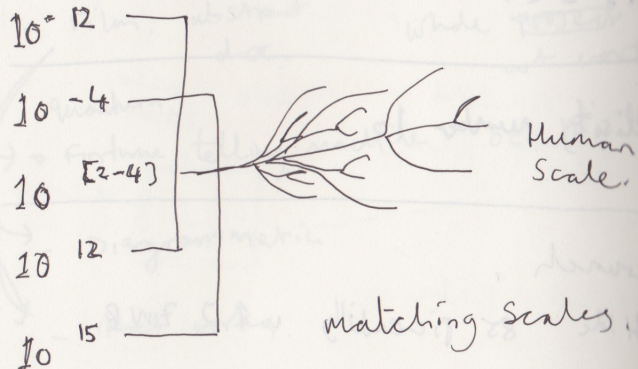
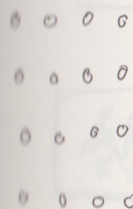


Illustration of the scale of data presented in the cabinet.

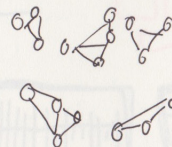
Superlattice. \sim lattice of all things.



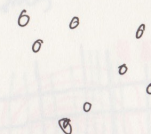
Crystalline.



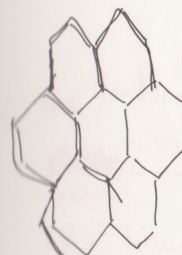
poly crystalline.



Amorphous.



Order
breaks
Down.



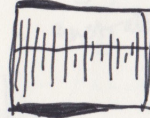
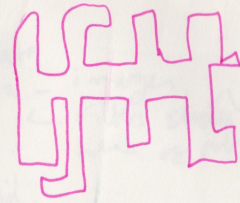
Crystalline
Solid.

Bends
Between the
Boundaries.

Vibration.

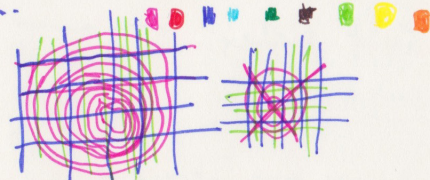
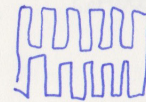
Strength — vibration.
Rigidity — vibration.

Wounded Terrain.

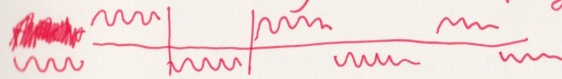


1	2	3	4	5
6	7	8	9	10
11	12	13	14	15
16	17	18	19	20

What is stable
What is mutable when
Chance becomes
injection.



one landscape. split by numerous topologies



the line between fact and fiction
becomes blurred.

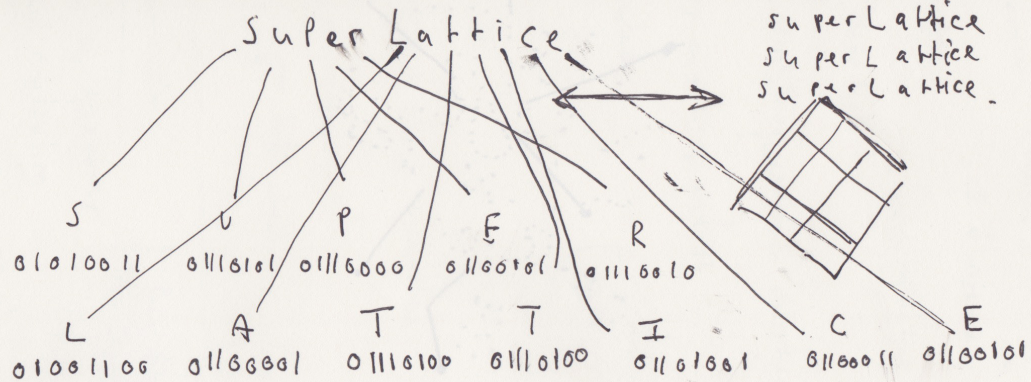
Ecosystems consist of many layers.
each is lost

complex ecosystems ~~are reduced to~~

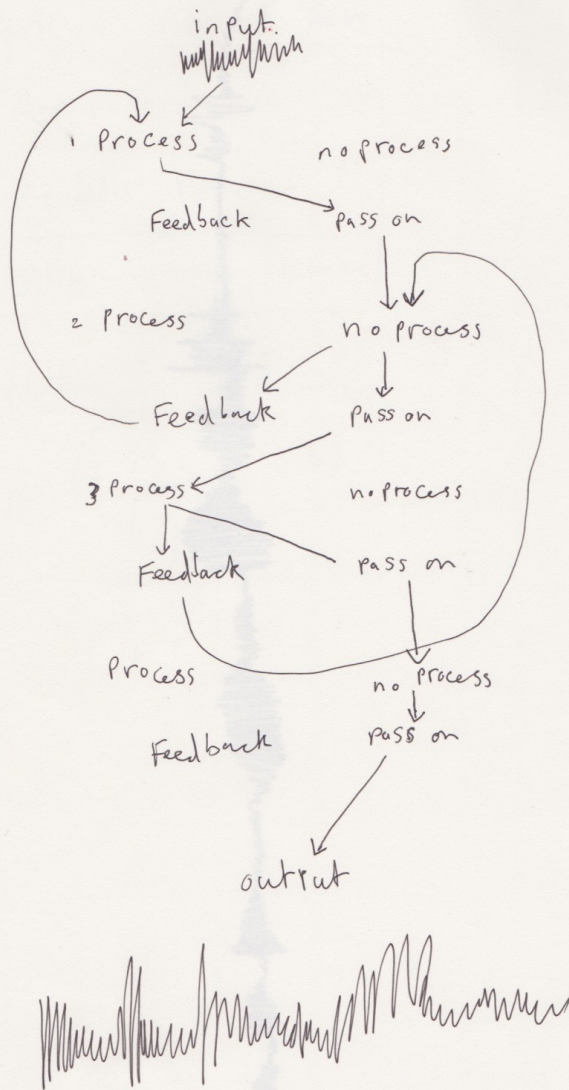
[Simple Single] layers quickly understandable
solutions to one break the other

Sketch detailing the concept and early creation stage of my work Wounded Terrain which features as part of the content projected into the cabinet.

morph, text \rightarrow binary



Text movement and conversion sketch



Early sketch mapping out a system where information is processed and fed back into itself

Links - detailing videos and useful accompanying media to give a greater understanding of the aesthetics and content in SuperLattice.

Wounded Terrain - a series of three interconnected animations created through manipulating satellite images of highly polluted areas. These images are distorted through custom code that combines the original images with data detailing the major pollutants in the area. The results are diagrammatic and abstract with the intention of breaking the image into something seemingly quantifiable but foreign from its source. Through this process the images are rendered unrecognisable in a similar way to how man made interferences have altered the landscape beyond recognition

Water, length: 06:52 - <https://vimeo.com/415006387>

Lake St Clair, Canada. Algal blooms feed on agricultural runoff and deplete oxygen from the aquatic environment.

Thwaites glacier, Antarctica. This huge glacier (100km long, 32km wide) is melting unexpectedly fast and has lost over 540 billion tons of ice since the 1980s.

Polluted rivers, Carolina, USA. Increased flooding results in rivers carrying excess pollutants and sediment that is deposited into the sea off the Carolina coast.

Air, length: 03:53 - <https://vimeo.com/415004824>

Bush fires, Australia: Australia's dry weather and increasing heat have resulted in the worlds worst bush fires, killing 25 people and displacing thousands from their homes.

Earth, length: 09:26 - <https://vimeo.com/414997933>

Carrera marble quarry, Italy. This quarry has been used since ancient Rome where high quality marble is cut for use in building, interior design and sculpture.

Bolivian deforestation. Bolivia. Large swathes of forest are cut down leaving traces visible from space. The largest use of this deforested land is for mechanised agriculture and cattle ranching.

Kansas, USA. Circular irrigation patterns dot America creating strange crop circles of life in dry and arid areas.

Inbound II Unbound - <https://vimeo.com/410742951>

Recent experiments made during quarantine and sketches around recording and manipulating 360 video, depth scans and 3d photogrammetry. The idea was to work within the limitations of the current quarantine and to try and work with the tools I had access to - (iPod touch, Xbox Kinect and Laptop) the 360 camera footage is from a test taken in my studio at York 3 days before campus closed.

Helios - <https://vimeo.com/410492784>

Film documentation of a recent exhibition held at the Factory Media Centre in Hamilton, 2019. The central work builds upon my earlier audio-visual piece *Heliosphere* and creates a more visually ambitious work using solar data from the 1 year period before the show. The techniques used in *Helios* have been developed to inform my work with information in *SuperLattice*.

Turbulent Forms exhibition publication - https://issuu.com/canadianmusiccentre/docs/turbulent_forms_monograph_issuu

Publication documenting the 2017 exhibition of Turbulent Forms at the Canadian Music Centre. The publication goes into detail on the works displayed and my methods of working with data.

[illegible]